

CESGA HPCN 2010

High Performance Computing Networking

CESGA'S ICTS EXPERIENCE

Santiago de Compostela, November 2010

Carmen Coteló Queijo

(Applications Technician, Galicia Supercomputing Centre)

Science and Technology Infrastructures (ICTS)

- ▶ Initiative of the Spanish Ministry of Science and Innovation.
- ▶ Unique infrastructures that are totally or partially open to use by the entire scientific-technological and industrial community, both national and international.
- ▶ Require very heavy investment in order to be built and maintained, and to pursue their objective of making progress in experimental science and technological development.
- ▶ The ICTS “label” is informed by several independent committees of experts, within them, point out the Advisory Committee for Unique Infrastructures (CAIS).

Research requires the appropriate infrastructure in order to answer questions that will enable progress to be made in scientific knowledge. When these scientific questions are at the limit of knowledge, the answers to them can only be obtained by carrying out experiments at large infrastructures and laboratories, and by combining the efforts of numerous scientists.

Source: Libro ICTS (MICINN)

Main aim is to grant access of individual researchers or research groups to ITCS-CESGA to:

- ▶ Carry out research projects.
- ▶ Acquire knowledge.
- ▶ Get training in technologies and in use at the premises.

Research requires the appropriate infrastructure in order to answer questions that will enable progress to be made in scientific knowledge. When these scientific questions are at the limit of knowledge, the answers to them can only be obtained by carrying out experiments at large infrastructures and laboratories, and by combining the efforts of numerous scientists.

Source: Libro ICTS (MICINN)

Main aim is to grant access of individual researchers or research groups to ITCS-CESGA to:

- ▶ Carry out **research** projects.
- ▶ Acquire knowledge.
- ▶ Get training in technologies and in use at the premises.

Research requires the appropriate infrastructure in order to answer questions that will enable progress to be made in scientific knowledge. When these scientific questions are at the limit of knowledge, the answers to them can only be obtained by carrying out experiments at large infrastructures and laboratories, and by combining the efforts of numerous scientists.

Source: Libro ICTS (MICINN)

Main aim is to grant access of individual researchers or research groups to ITCS-CESGA to:

- ▶ Carry out **research** projects.
- ▶ Acquire **knowledge**.
- ▶ Get training in technologies and in use at the premises.

Research requires the appropriate infrastructure in order to answer questions that will enable progress to be made in scientific knowledge. When these scientific questions are at the limit of knowledge, the answers to them can only be obtained by carrying out experiments at large infrastructures and laboratories, and by combining the efforts of numerous scientists.

Source: Libro ICTS (MICINN)

Main aim is to grant access of individual researchers or research groups to ITCS-CESGA to:

- ▶ Carry out **research** projects.
- ▶ Acquire **knowledge**.
- ▶ Get **training** in technologies and in use at the premises.



- ▶ 20% of capacity available to scientific and technological community.
- ▶ Technical and Administrative Support Access.
- ▶ Public Access Protocol.
- ▶ “External Access Committee”: evaluate and prioritize requests for access on the basis of excellence criteria.

- ▶ 20% of capacity **available** to scientific and technological community.
- ▶ Technical and Administrative Support Access.
- ▶ Public Access Protocol.
- ▶ “External Access Committee”: evaluate and prioritize requests for access on the basis of excellence criteria.

- ▶ 20% of capacity **available** to scientific and technological community.
- ▶ Technical and Administrative **Support** Access.
- ▶ Public Access Protocol.
- ▶ “External Access Committee”: evaluate and prioritize requests for access on the basis of excellence criteria.

- ▶ 20% of capacity **available** to scientific and technological community.
- ▶ Technical and Administrative **Support** Access.
- ▶ Public **Access Protocol**.
- ▶ “External Access Committee”: evaluate and prioritize requests for access on the basis of excellence criteria.

- ▶ 20% of capacity **available** to scientific and technological community.
- ▶ Technical and Administrative **Support** Access.
- ▶ Public **Access Protocol**.
- ▶ “**External Access Committee**”: evaluate and prioritize requests for access on the basis of excellence criteria.

▶ Affiliation:

Galician Research Community and CSIC.

Public R&D institutions or non-profit private R&D centers.

▶ Nationality or legal residence:

European Union and European Economic Area.

Member countries participate in the CYTED Programme.

▶ Modalities:

Modality 1: Researchers working on their doctorate thesis.

Modality 2: Doctors or researchers with 3 years of proved research experience.

▶ Remote access to Finis Terrae Supercomputer:

3.000.000 CPU hours, 20% of computational hours/year.

Storage service.

Technical support (RT: Request Tracker).



▶ Remote access to Finis Terrae Supercomputer:

3.000.000 CPU hours, 20% of computational hours/year.

Storage service.

Technical support (RT: Request Tracker).



▶ In-house research visits at CESGA:

Up to 10.000 CPU hours/access.

Direct technical and administrative support.

Contact with other research groups (synergies).



- ▶ Three public calls per year.
- ▶ Different offer of access for different calls/periods.
- ▶ After deadline proposals are sent to the External Access Committee.
- ▶ For-month periods of access.

- ▶ Three public calls per year.
- ▶ Different offer of access for different calls/periods.
- ▶ After deadline proposals are sent to the External Access Committee.
- ▶ For-month periods of access.

- ▶ Three public **calls** per year.
- ▶ Different **offer** of access for different calls/periods.
- ▶ After deadline proposals are sent to the External Access Committee.
- ▶ For-month periods of access.

- ▶ Three public **calls** per year.
- ▶ Different **offer** of access for different calls/periods.
- ▶ After **deadline** proposals are sent to the External Access Committee.
- ▶ For-month periods of access.

- ▶ Three public **calls** per year.
- ▶ Different **offer** of access for different calls/periods.
- ▶ After **deadline** proposals are sent to the External Access Committee.
- ▶ For-month **periods** of access.

- ▶ Three public **calls** per year.
- ▶ Different **offer** of access for different calls/periods.
- ▶ After **deadline** proposals are sent to the External Access Committee.
- ▶ For-month **periods** of access.

Next deadline:

16th December, 2010 !



ICTS-CESGA: Single Access Point



CESGA - SCIENCE AND TECHNOLOGY INFRASTRUCTURE

Finis Terrae supercomputer is managed by CESGA and recently included in the Map of Science and Technology Infrastructures (in spanish ICTS). It is an integrated system of 144 shared memory nodes with a total of 20,000 GB of main memory, 390,000 GB disk and 2,580 Itanium processors.

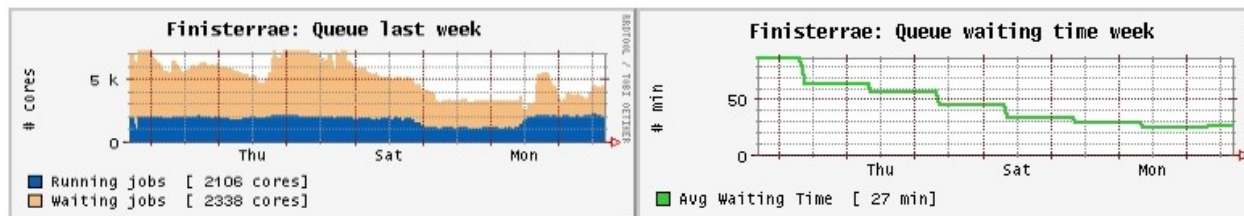
Finis Terrae was cofinanced by the Regional Government of Galicia (Xunta de Galicia), the Spanish National Research Council (CSIC) and the European Regional Development Fund (ERDF).

ACCESS - First Call for Access 2011 is open !

CESGA through periodic calls, offers access to its resources to researchers from the scientific community of EU countries, European Economic Area, countries of the CYTED program, and also to researchers with legal residence in any of these countries.

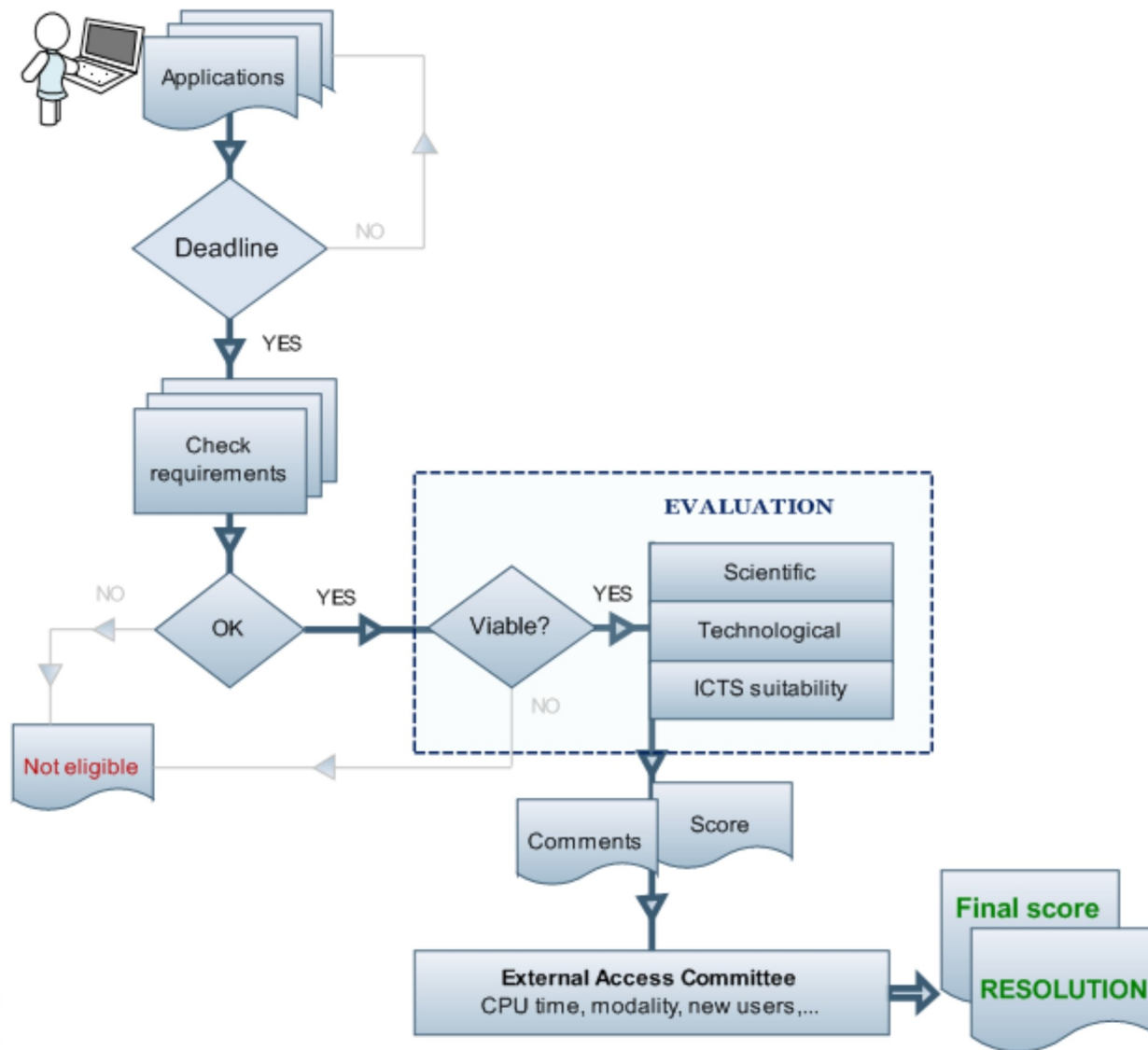
The main aim is to provide access to the researchers or research groups to CESGA's resources in order to carry out research projects, acquire knowledge or get training in technologies in use at the premises.

CESGA sets at the disposal of the ICT users 3.000.000 CPU hours, 20% of computational hours available per year of its Finis Terrae supercomputer.



FINISTERRAE



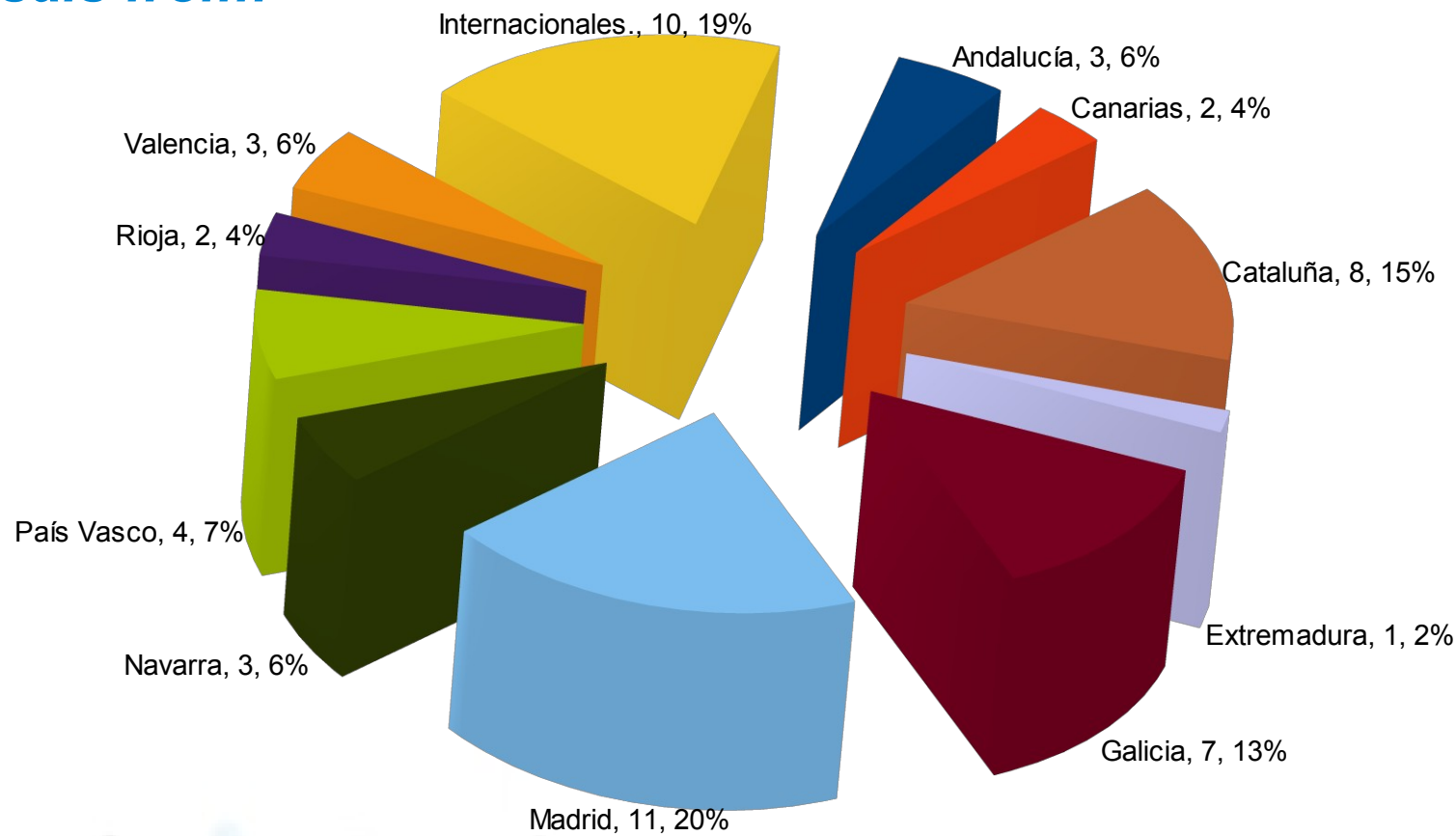


REMOTE ACCESS					
	Applications	Access	CPU time (h)		
			Prioritized	Not Prioritized	TOTAL
Modality 1	7	7	483.000	228.000	711.000
Modality 2	35	19	2.087.202	1.236.838	3.324.040
TOTAL	42	26	2.570.202	1.464.838	4.035.040

REMOTE ACCESS					
	Applications	Access	CPU time (h)		
			Prioritized	Not Prioritized	TOTAL
Modality 1	7	7	483.000	228.000	711.000
Modality 2	35	19	2.087.202	1.236.838	3.324.040
TOTAL	42	26	2.570.202	1.464.838	4.035.040

RESEARCH VISITS				
	Applications	Access	Weeks	CPU time (h)
Modality 1	4	4	18	40.000
Modality 2	8	8	25	80.000
TOTAL	12	12	43	120.000

Proposals from:



<http://icts.cesga.es>

Apply

Questions:

icts@cesga.es

THANKS!

carmen@cesga.es