

❑ The Infrastructure is monitored with SAME framework.

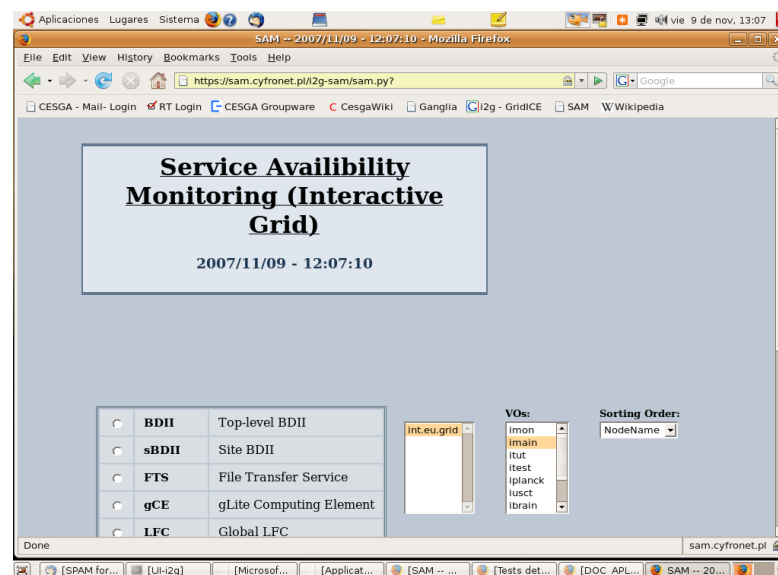
❑ <https://sam.cyfronet.pl/i2g-sam/sam.py?>

▶ Three VOs:

- imon
- imain
- ihep

▶ Two sensors:

- CE
- SE



❑ Tests are executed hourly.

- New tests have been developed
  - ▶ MPI job submission.
    - ask for 2 nodes, computes pi.
  - ▶ PACX MPI job submission.
    - ask for 3 nodes, ..
  - ▶ Interactive jobs with i2glogin.
- A daily version executed at 2:30 ask for 8 nodes (openmpi and pacx-mpi).
- We are developing new VO specific tests.
  - ▶ ifusion, ienvmod, ...

- ❑ SAM test for **remaining VOs**:
  - ▶ itut, itest, iplanc, iusct, ibrain, ifusion, ienvmod.
  - ▶ Will **require membership** in VOs for monitoring team members.
  - ▶ VO specific test **provided by VO.**
- ❑ **RB SAM tests** will be enabled **in near future** (probably next week)
  - ▶ Lcg-RB functionality.
  - ▶ No CrossBroker specific test (yet).